

## **‘Net Pal Help Contents**

### **Overview**

- [What is ‘Net Pal?](#)
- [The main ‘Net Pal window](#)
- [The ‘Net Pal Connect window](#)
- [Command line options](#)

### **Commands**

- [Connect](#)
- [Disconnect](#)
- [Stop](#)
- [The Options Dialog](#)
- [The Connection Properties dialog](#)
  - [The Connection Properties page](#)
  - [The Ping page](#)
- [The Connection Status dialog](#)
- [Toggle Auto Dial command](#)

### **Ordering and Registration**

- [Ordering and Registration information](#)
- [Net Pal Order Form](#)
- [Register dialog](#)
- [Support options](#)

## What is 'Net Pal?

'Net Pal allows you to dial your internet service provider and connect your computer to the internet. 'Net Pal works with the Dial-up Networking feature of Windows 95 to make the connection and has the following features :

- Re-dials until a connection is obtained.
- Can re-dial until a specified connect speed is obtained.
- Reconnects automatically when disconnected by the remote host.
- Automatically dials a connection whenever a winsock application requires a connection to the internet.
- Keeps track of how much time and money you have spent on each of your connections
- Ping option can provide network activity at intervals to prevent connections being dropped.
- Runs as an icon in the taskbar tray, using minimal screen space.
- IP address is displayed when connected.

## What's new in this version

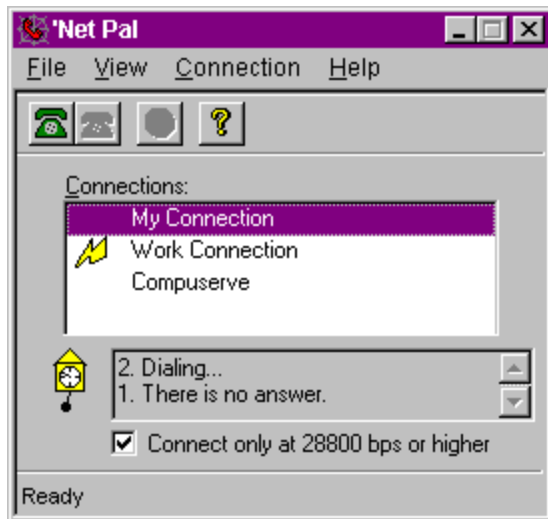
The following new features were introduced in version 1.1 of 'Net Pal:

- Net Pal can now add an icon to the task bar tray.
- A minimum connect speed can be set up for each connection.
- The log now records connect speed and the number of dial attempts for each call.
- Call times can optionally be rounded up to the next whole minute.
- The window position and state can be restored each time 'Net Pal starts up.
- A shortcut can be added to the Windows Startup folder to launch 'Net Pal automatically every time Windows is started.
- Dialing attempts history can now be seen while dialing a connection and when a connection is active by using a button (labelled "...") on the 'Net Pal window.

## The main 'Net Pal window

Click on various parts of the image below to see a description of the functions of the different components on the main 'Net Pal window.

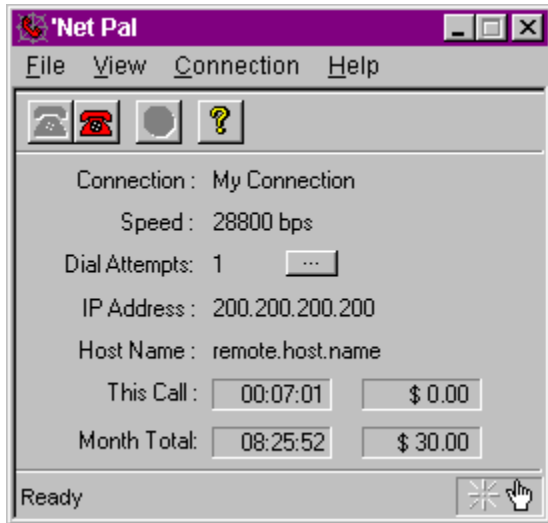
You can press the F1 key at any time while running 'Net Pal to get help on the current procedure.



## The 'Net Pal Connect window

The 'Net Pal connect window is displayed when a connection has been established. It displays information such as your local IP address and the time connected.

Click on various parts of the image below to see a description of the functions of the different components on the connect window.



## Using the 'Net Pal taskbar tray icon

'Net Pal can add an icon to the taskbar tray (in the bottom right corner of the screen) which can be used to control the most common 'Net Pal features. Using the taskbar icon minimizes 'Net Pal's screen usage and can make its usage almost transparent. To enable the taskbar tray icon set the "Add icon to taskbar tray" option in the [Options](#) dialog.

The icon will appear as a telephone in the taskbar tray and will appear different depending on the state of 'Net Pal as follows:



A red icon appears when there is no active connection.



A yellow icon appears when a connection is being dialed.



A green icon appears when a connection is active.

### Double clicking on the tray icon

When you double click on the tray icon, the main 'Net Pal window will be hidden if it is currently displayed, or it will be displayed again if it is currently hidden.

### The tray icon menu

Clicking on the tray icon with the right mouse button will display a pop-up menu. This menu has the following commands on it:

<b>Show/Hide</b>	This option will either show or hide the main 'Net Pal window. If the window is displayed, clicking the minimize button on the window will also hide it.
<b>Connect</b>	This option will start dialing your connection. If you have more than one connection then another sub-menu will appear allowing you to choose which connection to dial. This option is the same as selecting the <a href="#">File   Connect</a> command in the main 'Net Pal window.
<b>Disconnect</b>	This option will disconnect from the currently connected remote computer and is the same as the <a href="#">File   Disconnect</a> command in the main 'Net Pal window. If a connection is not active, then this option will be disabled.
<b>Stop</b>	This option will stop the current dialing operation. If a connection is not being dialed then this option will be disabled. This is the same as the <a href="#">File   Stop</a> command in the main 'Net Pal window.
<b>Connect only at &lt;speed&gt; bps or higher</b>	This option will appear only when a connection is being dialed and only if you have a <a href="#">minimum connect speed</a> enabled for that connection. If a check appears next to this option then the minimum connect speed will be used. If there is no check next to this option then any speed will be allowed for the connection regardless of the minimum connect speed setting. Selecting this option will toggle the check on and off.
<b>Exit</b>	This option will shut down 'Net Pal. If a connection is active then it will be disconnected first.
<b>About</b>	This option will display the program copyright message, version number and registered user information.

### Minimizing the main window

When the tray icon is displayed the minimize button on the main 'Net Pal window will hide the window instead of minimizing it. To display the main window again you can double click on the tray icon or you can right click on the tray icon and select the "Show" option from the pop-up menu.

### Tray icon tooltips

If you move the mouse pointer directly over the tray icon and leave it there for about ½ second then a tooltip will appear next to the mouse pointer. The text of the tooltip will be different depending on the current state of 'Net Pal.

- If 'Net Pal is not connected then the tooltip will simply display the word "Disconnected"

- If 'Net Pal is dialing a connection then the tooltip will display the name of the connection being dialed and the number of dialing attempts made so far (this will appear in brackets).
- If 'Net Pal is connected then the tooltip will display the name of the connection, the connection speed and the duration of the current call. The duration which is displayed in this tooltip is updated every 15 seconds.

## Command line options

Net Pal supports a single command line option which allows a connection to be dialed immediately when Net Pal is started.

The option takes the following form:

```
/D:"Connection Name"
```

where "Connection Name" is the name of one of your dial-up networking connections. The double quote characters must be present.

To modify a shortcut icon so that a connection is immediately dialed when you click on the shortcut icon, do the following:


- Right-click on the shortcut icon and select the Properties option.
- Select the Shortcut tab.
- In the Target edit box, enter a space and the "/D:"Connection Name" at the end of the existing command text, where "Connection Name" is the name of the connection you want to dial.
- Select OK



## The Connect command


Selecting the Connect command from the File menu will dial the selected connection in the Connections list box. You will see the status of the dialing process below the Connections list box during this process.

When the connection is established Net Pal will display the Connect Window, which will display information about the call.

A connection can also be established by clicking on the  toolbar icon, or by double-clicking on the connection name in the Connections list box.


## The Disconnect command

Selecting the Disconnect command from the File menu will disconnect from the currently connected remote computer.

A connection can also be disconnected by clicking on the  toolbar icon. If 'Net Pal is shut down while a connection is active, then the connection will be terminated before 'Net Pal closes.

## The Stop command

The Stop command on the File menu is active only while a connection is being dialed. Selecting this command will cause the current dialing operation to be canceled.

The  toolbar icon can also be used to terminate a dialing operation.

## The Options dialog

The Options dialog can be displayed by selecting the Options command from the View menu. The options that can be set in this dialog are global, and affect all connections in 'Net Pal. The following options can be set in this dialog:

### Redial Connections

Selecting this option will cause 'Net Pal to keep re-dialing your connections until a connection is made. If the remote computer does not answer the phone, is busy or cannot log you into it's network then the number will be dialed again if this option is enabled. The **interval** allows you to set the number of minutes and seconds to wait before attempting to dial the remote computer again after an unsuccessful attempt. Some computers require an interval of 3 to 5 seconds between dialing attempts to allow dial-up networking and the modem time to reset.

### Minimize on connect

Selecting this option will cause the 'Net Pal window to automatically minimize (shrink to a taskbar icon) when a connection is established. If 'Net Pal is running as a taskbar tray icon and this option is selected then the 'Net Pal window will be hidden (instead of minimized) when a connection is established, and it can be displayed again by double-clicking on the taskbar tray icon.

### Copy IP to clipboard

If this option is enabled then the IP (Internet Protocol) address of your local machine will be copied to the clipboard when a connection is established. This allows you to paste your IP address into another application (such as an e-mail message) by using the clipboard.

### Auto reconnect

This option will cause 'Net Pal to immediately dial a connection again if you are unexpectedly disconnected from the remote computer for any reason. This can happen if the remote computer logs you off for any reason or because of phone line problems.

### Disable if auto-dialed

If this option is checked then the *auto reconnect* option will be disabled if the connection was made as a result of auto-dialing when another application required an internet connection. This may be required to prevent the connection from being constantly re-established and hence adding to your charges. This will most likely be useful for applications which connect to the internet at regular intervals and which may occur while your computer is unattended.

### Add icon to taskbar tray

This option will add an icon to the Windows taskbar tray (in the bottom right hand corner of the screen). When running 'Net Pal as an icon in the taskbar tray, 'Net Pal will behave slightly differently, but can be much more convenient to use and access. See the help topic [Using the taskbar tray icon](#) for more information on using and interacting with the 'Net Pal tray icon.

### Restore window state

If this option is enabled then 'Net Pal will remember the position and state of its window whenever it is shut down, and it will restore the same window position and state the next time 'Net Pal is started. If the window is minimized when it is shut down, then it will also be minimized the next time you start 'Net Pal. If 'Net Pal is running as a taskbar tray icon, then the position and hidden/displayed state of the window will be restored each time 'Net Pal starts.

### Run on Windows start-up

If this option is enabled then a shortcut will be added to the Windows Startup folder to automatically start 'Net Pal whenever Windows starts. If this option is turned off, then any existing shortcut to 'Net Pal in the Startup folder will be removed when OK is selected to close this dialog.



## The connection properties dialog

The Connection Properties dialog can be displayed by selecting the Connection Options command from the Connection menu. This dialog allows options to be set for each connection you have. The dialog contains tabbed pages for the following categories:

- Properties page - sets user name, password and minimum connect speed for the connection.
- Usage page - sets usage tracking options for the connection.
- Ping page - sets ping options for the connection to help prevent dropped connections.

## The connection properties page

The options on this page allow you to set some general properties for this connection including the user name, password and minimum connect speed.

### User name

You can enter the user name to be used for this connection here. If you do not enter a user name in this edit box then the default user name from Windows dial-up networking for this connection will be used. If Windows does not have a default user name then you will be prompted for your user name every time you connect using this connection.

### Password

You can enter your password to be used for this connection here. The password will not be displayed as you type for privacy. You must enter your password exactly the same in both edit boxes. If you do not enter a password here then you will be prompted to enter your password every time you connect using this connection.

### Minimum connect speed

When this option is enabled 'Net Pal will check the connect speed as soon as a connection is established with the remote computer (but before the user is logged on) and if it is lower than the speed specified here then 'Net Pal will disconnect and re-dial again.

You should enter the desired connect speed in bits-per-second (bps). For example you could enter 28800 or 26400 as valid minimum connect speeds.

You must also enter the number of dial attempts for which to use the minimum connect speed value. For example, you could set this value to 5 to indicate that after 5 unsuccessful attempts to establish a connection, any connect speed will be allowed. If this is set to "Unlimited" then a connection will never be established at a lower speed than that specified.

NOTE: When a minimum connect speed is specified, there is still an option to disable the setting when the connection is actually dialed. This will appear as a checkbox in the 'Net Pal window and as an option on the taskbar tray icon menu. This allows the user complete control over how the connection is established.

### Windows 95 Properties

Pressing this button will display the standard Windows 95 dial-up networking dialog box for this connection. This allows you to set such options as the modem and server type for the connection directly from 'Net Pal, without having to go through the dial-up networking folder or Windows explorer.

## The connection usage page

The options on this page allow you to set usage tracking options for this connection.

### Track Usage

When this option is enabled 'Net Pal will keep track of the time and money you spend when online. Whenever a connection is made the length and cost of the call will be accumulated on a monthly basis, and you can view your usage history for the last 12 months.

### Fixed Fee

If your Internet Service Provider charges a fixed fee per month, enter that amount here. 'Net Pal will factor this amount into the monthly cost.

### Free Hours

If you are granted a fixed number of hours of connect time per month free (or for your fixed monthly fee) then enter that number of hours here.

### Hourly Charge

Enter that amount you are charged per hour of online time here. This charge will be used to calculate cost once you have spent more time than your *free hours* online each month.

### Billing Cycle Day

Enter the day of the month on which your Internet Service Provider bills you. 'Net Pal will roll over your monthly time and cost totals on this day of every month.

### Round call times up to the next whole minute

If this option is enabled then the time logged for each call made will be rounded up to the next whole minute. This means, for example, that two calls of 20 seconds each would show up in the log as two calls of one minute each, for a total time of 2 minutes online. The cost would also be calculated on 1 minute of connect time for each of the two calls.

### Log All Calls

If this item is checked then 'Net Pal will keep track of every call that is made individually. 'Net Pal will keep track of the date, time and duration of every call that you make.



## The Ping page

This page allows you to set *ping* options for this connection. By setting a ping option ‘Net Pal will generate activity on your connection at an interval you specify. This can prevent your Internet Service provider from logging you off when your connection is idle for too long.

### Don’t Ping

Disables the Ping feature.

### Ping DNS Server

Choosing this option will cause ‘Net Pal to *ping* your DNS server at the interval you specify. ‘Net Pal will send an echo packet to the DNS server and wait for a reply.

### Interval

This option is enabled if you choose a ping option and allows you to set the interval in minutes between *pings*.

### Don’t ping if auto-dialed

Selecting this option will prevent ‘Net Pal from performing the ping when the connection was made automatically as a result of another application requiring an internet connection. You may want to use this option if you do not want the connection to be kept alive unless you explicitly establish the connection through ‘Net Pal yourself.

When a connection is active an icon will be displayed in the status bar to indicate whether the ping feature is currently active or not.



will be displayed if the ping feature is active.



will be displayed if it is not.

## The Connection Status dialog

This dialog displays usage history for the currently selected connection. If you have enabled the Track History options in the Connection Properties dialog, then this dialog will display the totals for (up to) the last 12 months.

Only 12 months of history are stored and the totals will be rolled back each new month. After 12 months your totals for those periods will not be available in 'Net Pal.

The list box displays the number of calls, the time spent online and the total cost for each month. The date displayed is the date on which the monthly period started.

To close this dialog, click the Close button or the **X** icon in the upper right corner of the window.

### **Include fixed fee**

When this option is checked the fixed monthly fee for this connection will be included in the Cost column of the list box in this dialog. If you clear this option, then the cost displayed will not include the fixed monthly fee and will display the amount over the fixed fee which has been spent each month.

### **Clear**

This button allows you to delete all of your usage history. You will be prompted to make sure you really want to do this, as once you clear your usage history you cannot recover it again.

### **Show Log >>**

If you have chosen to keep a call log for this connection then this button will be enabled. This button will expand this dialog to display a log of all the calls you have made on this connection. The date, time, duration, connect speed and number of dialing attempts of each call is displayed, with the most recent calls displayed first. The number of dialing attempts indicates how many times the number was dialed before successfully establishing a connection. Once the dialog has been expanded, pressing this button again will hide the log and shrink the dialog again.

## **Toggle Auto Dial command**

This command will toggle the Auto Dial feature for the currently selected connection. Only one connection can be designated as an Auto Dial connection. The connection which is designated as the Auto Dial connection will be displayed with a lightning bolt icon next to it in the connections list box.

When you use the auto dial feature of 'Net Pal, 'Net Pal will load automatically and dial the selected connection whenever any (32 bit) application requires a connection to the internet and there is no currently active connection. If 'Net Pal is already loaded but is not connected then the existing instance of it will just dial the selected connection.

Using this feature you can set up another application (such as an e-mail program) to automatically check for mail at a given interval (say once an hour). Every hour when the e-mail program attempts to retrieve your e-mail, 'Net Pal will automatically dial your connection if there is no active connection.

Some applications allow you to set the connection method to the internet and let you choose between using a dial-up networking connection or using a direct network-based connection to the internet. In these cases, choose the direct network-based connection method. Otherwise each application will dial the connection independently of 'Net Pal, and the time/cost online will not be tracked by 'Net Pal.

## What is Registration?

'Net Pal is a "Shareware" program. This means that you are free to use the software for up to 30 days free of charge for evaluation purposes. If you decide to keep the software after 30 days then you must register your copy with Kookaburra Software for a small fee.

The shareware (or unregistered) version of 'Net Pal contains all of the functionality of the registered version. This allows you to make sure that it works satisfactorily for you before you purchase the software.

When you register 'Net Pal the *nag* screen which is displayed when you start the program will be removed. In addition registration entitles you to free technical support and minor upgrades to the software. And don't forget that registering this and other shareware programs allows the authors to continue development on those and new products.

Click here to find out [how to register](#).

## How to Register 'Net Pal

The registration fee for a single copy license of 'Net Pal is US\$19.

When you place an order you will receive by return e-mail or regular mail a product registration number. You must then enter your name and this registration number into your existing copy of 'Net Pal using the Registration dialog box, which is accessed by selecting the Register option from the 'Net Pal Help menu. You should **keep your registration number safe**, so that you can re-enter it if you need to re-install Windows or if you upgrade to a new computer at any time in the future.

### Ordering by check

To order by check print and send the order form and a check to Kookaburra Software. Instructions for ordering by check are included on the order form. Payment must be in **US dollars** drawn on a US bank, or you can send international postal money orders in US dollars. Your registration information will be sent to you via e-mail or post.

### Ordering through Compuserve

To order on the Compuserve online service and have the registration fee added to your CompuServe bill use the CompuServe command GO SWREG (click on the traffic light icon or the Go button in WINCIM and enter SWREG) and follow the menus. You can search on the keyword Kookaburra or Net Pal. The Compuserve registration ID for 'Net Pal is **13571**.

Your registration information will be electronically mailed to your CompuServe account within a few business days.

### Ordering by Credit Card

For information on ordering by credit card, click here: [Credit Card Ordering Information](#).

Your registration information will be sent to you via e-mail or post.

### Site licenses

A site license for 'Net Pal entitles an organization to receive a single product registration number and use it to register 'Net Pal on the specified number of computers. Site license pricing is indicated below. Note that site licenses cannot currently be purchased when ordering through Compuserve - you must choose one of the other ordering methods. All prices listed are in US\$.

2 to 9 computers:	\$17 each
10 to 24 computers:	\$15 each
25 to 49 computers:	\$13 each
50 to 99 computers:	\$11 each
100 or more computers:	\$9 each

## Credit Card Ordering

You can order with MasterCard, Visa, American Express, or Discover through PsL.

Note that credit card orders are taken through PsL, an independent company which provides a credit card ordering service only - **if you have any questions regarding the status of your order after it has been placed with PsL, please contact Kookaburra Software directly.** The best way to contact us for order status information is to send e-mail to [orders@kburra.com](mailto:orders@kburra.com). For other inquiries regarding 'Net Pal please send e-mail to [support@kburra.com](mailto:support@kburra.com)

The best ways to reach PsL are:

- Online: Go to our Web site at <http://www.kburra.com> and follow the links for online ordering. A secure form is available for your protection.
- FAX: To 713-524-6398. You can use the order form below. Please be sure to ask for product #14948 and please type or block print very plainly.
- Email: To PsL at [14948@pslweb.com](mailto:14948@pslweb.com)
- Mail credit card orders to PsL at P.O.Box 35705, Houston, TX 77235-5705.
- Phone: PsL's operators are available from 8:00 a.m. to 6:00 p.m. CST Monday-Friday at the following numbers:  
800-242-4775 Ext.14948  
713-524-6394 Ext.14948

**THE ABOVE NUMBERS ARE FOR CREDIT CARD ORDERS ONLY.  
THE AUTHOR OF THIS PROGRAM CANNOT BE REACHED AT THESE NUMBERS.  
CONTACT KOOKABURRA SOFTWARE DIRECTLY FOR ALL OTHER SUPPORT OR INFORMATION  
REQUESTS.**

When you contact PsL they will require the following information:

Product Name:            **'Net Pal**  
Product ID:               **14948**  
Your Name:                \_\_\_\_\_

Company:                 \_\_\_\_\_

Your E-Mail Address:    \_\_\_\_\_

Credit Card               MasterCard    VISA    AMEX    Discover

Credit Card Number:    \_\_\_\_\_

Expiration Date:        \_\_\_\_\_

Name On Card:            \_\_\_\_\_

Billing Address:         \_\_\_\_\_  
\_\_\_\_\_

Qty. Required:          \_\_\_\_\_

**Please ensure that the credit card number *and* expiration date are provided and are written clearly if ordering by fax or mail.**

Any questions about the status of the shipment of the order, registration options, product details, technical support, volume discounts, dealer pricing, site licenses, non-credit card orders, etc, must be directed to Kookaburra Software, P.O. Box 23200-394, San Jose, CA 95153 or by internet e-mail to

orders@kburra.com.

PsL will notify us the day that they receive your order and we will send your registration number to you.

## 'Net Pal Order Form

This order form is for ordering by **check or money order only**.

To print this order form click the Print button above or select the Print Topic option on the File pull-down menu.

These prices are guaranteed through September, 1997. An up-to-date version of 'Net Pal can be obtained from the Kookaburra Software web-site at [www.kburra.com](http://www.kburra.com).

**Send this order form to:** **Kookaburra Software**  
**P.O. Box 23200-394**  
**San Jose, CA 95153**  
**U.S.A.**

Name: \_\_\_\_\_  
Company: \_\_\_\_\_  
Address: \_\_\_\_\_  
City: \_\_\_\_\_  
State/Province: \_\_\_\_\_  
Zip/Post Code: \_\_\_\_\_ Country: \_\_\_\_\_  
Phone: (daytime) \_\_\_\_\_ (evening) \_\_\_\_\_  
**E-Mail Address:** \_\_\_\_\_

### Order Information

#### 'Net Pal Single Copy License

I would like to register \_\_\_\_\_ copies of 'Net Pal at \$19 each = \_\_\_\_\_

#### 'Net Pal Site License - For companies or organizations

2 to 9 computers: \_\_\_\_\_ computers at \$17 each = \_\_\_\_\_  
10 to 24 computers: \_\_\_\_\_ computers at \$15 each = \_\_\_\_\_  
25 to 49 computers: \_\_\_\_\_ computers at \$13 each = \_\_\_\_\_  
50 to 99 computers: \_\_\_\_\_ computers at \$11 each = \_\_\_\_\_  
100 or more computers: \_\_\_\_\_ computers at \$9 each = \_\_\_\_\_

Total payment enclosed: \$ \_\_\_\_\_

Payment must be in **US dollars** drawn on a US bank, or you can send international postal money orders in US dollars. Make checks payable to Kookaburra Software.

How did you hear about 'Net Pal? \_\_\_\_\_

Comments:



## How to enter your registration number

You can enter your registration number (obtained by registering your copy of 'Net Pal) using the Register dialog. The Register dialog can be displayed by selecting the Register option from the Help menu.

### **Name**

Enter your name as it appears on your registration notice from Kookaburra Software. You must enter your name exactly as it appears on this notice.

### **Registration Number**

Enter your registration number exactly as it appears on your registration notice from Kookaburra Software.

Once you have entered your registration information correctly and selected OK, your copy of 'Net Pal will be registered. You must **save your registration information (name and number)** as you will need to re-enter it if you re-install Windows or if you upgrade to a new computer.

## Support options

Kookaburra Software currently provides technical support to registered users of 'Net Pal by e-mail and by regular postal mail only. You should always check the Kookaburra Software web-site ([www.kburra.com](http://www.kburra.com)) before requesting support to make sure you are using the latest version of 'Net Pal and to view any common support issues which may be on the web-site.

When requesting support please be sure to include the following information:

- Your name and contact information (either e-mail address (preferred) or street address for regular mail).
- What operating system are you using? For example, Windows 95, Windows NT 4.0 etc.
- What version of 'Net Pal are you using? You can select the About option from the Help menu to find the version of 'Net Pal you are using.
- If your copy of 'Net Pal is registered, what is your registration number? You can select the About option from the Help menu to find this information.
- Nature of the problem?
- Is the problem reproducible?
- If an error message was displayed, please include the full text of the error message.

### Requesting support by E-Mail

Please send e-mail to [support@kburra.com](mailto:support@kburra.com). Be sure to include the above information

### Requesting support by regular mail

Please send mail to the following address:

**Kookaburra Software  
P.O. Box 23200-394  
San Jose, CA 95153  
U.S.A.**

Be sure to include the above information.

## 'Net Pal License Agreement

By installing 'Net Pal from Kookaburra Software on your computer you agree to the following terms and conditions:

- This product is distributed as a SHAREWARE computer software program. You may evaluate this product for a maximum of thirty (30) days from the time you first install it onto your computer. After this time you must either remove this product from your computer or register the product with Kookaburra Software.
- This product may be installed on a single computer only and used by one person only.
- Kookaburra Software makes NO WARRANTIES regarding this product. You accept this product on an AS IS basis. Kookaburra Software is not responsible for any damages whatsoever, including loss of information, interruption of business, personal injury and/or any damage or consequential damage without limitation, incurred before, during or after the use of our products.
- This program is owned by Kookaburra Software and is copyright protected. No program, code, part, image, text or sound may be copied or used in any way by the user except as detailed in this license agreement.
- You are permitted to make one (1) back-up copy of the registered program for your personal protection.
- The shareware (unregistered) version of this product may be redistributed freely under the following conditions:
  - ◇ The distribution format is not modified in any way from the original supplied by Kookaburra Software. Specifically no files may be altered, deleted or added to the distribution file(s).
  - ◇ The distribution does not include a registration number. In particular, you may not distribute a registered piece of software.
  - ◇ No money is charged to the person receiving the software, beyond reasonable cost of packaging and other overhead.

The **File** menu displays commands which allow you to Connect to a connection, disconnect from an active connection, stop a dialing operation and exit the application.

The **View** menu displays an Options command which allows you to set global options for Net Pal.

The **Connection** menu displays commands which allow you to set properties, view status and enable or disable auto-dial for the selected connection.

The **Help** menu displays commands which allow you to view help, register your copy of 'Net Pal and display the About box for 'Net Pal.

The **Connect** button will dial and attempt to connect to the selected connection in the connections list box.



The **Disconnect** button will be enabled only when you are currently connected to a remote computer through one of your connections. Pressing this button will disconnect from the current connection and hang up the phone.

The **Stop** button will be enabled only when 'Net Pal is attempting to dial and connect to a connection. Pressing this button will stop the dialing operation and return 'Net Pal to its idle state.

The **About** button displays a dialog box, showing the version and copyright message for 'Net Pal. It also displays the name and registration number of the person who has registered this copy of 'Net Pal.

The **Connections list box** displays all of the dial-up networking connections which are defined on your system.

This little lightning bolt icon is displayed next to the connection which has been designated as the auto-dial connection.

The status bar displays context sensitive information for 'Net Pal. For example, when you select a menu item, a description of the menu item will be displayed in the status bar.

This field displays the name of the dial-up networking connection which you are currently connected to.

This field displays the speed at which your modem is connected to the remote computer. The speed is displayed as the number of bits per second (bps).



This field displays the Internet Protocol (IP) address of your machine while it is connected to the internet. If your Internet Service provider assigns you a dynamic IP address, then this will be different every time you connect to the internet. You can set an option to copy your IP address to the clipboard when you connect, if you desire.

The field displays the host name of the computer you are connected to.


This field displays the length of time you have been connected for the current call.

This field displays the cost of the current call. This field is only displayed if you select the Track Usage option in the properties for this connection.

This field displays the total time you have spent online for this connection for the **current month**. This field is only displayed if you select the Track Usage option in the properties for this connection.

This field displays the total cost for the **current month** for the time you have spent online with this connection. This field is only displayed if you select the Track Usage option in the properties for this connection.

This icon is displayed when you are connected. It displays as a hand if the connection was manually dialed, or as a lightning bolt if the connection was dialed automatically.

This icon is displayed when you are connected. It indicates that the ping feature is currently active. If the ping is inactive then this icon will be displayed instead: 



The clock appears when 'Net Pal is dialing a connection. It simply gives confirmation that 'Net Pal is in a responsive state while the dialing is in progress.

This text box appears while a connection is being dialed. It displays the state of the current dialing operation, and the reason for failure of all previous dialing attempts. You can use the arrows on the right side of the text box to scroll up and down through the entries.

This check box appears when dialing a connection if a minimum connect speed has been enabled for this connection. You can set a minimum connect speed in the connection options dialog. If there is a check in this box, then any connection which is made at a lower speed will immediately be terminated and dialed again. If this box is not checked then a connection will be allowed at any speed.

This field displays the number of times the remote computer was dialed before a successful connection was made.

If you press this button a dialog will be displayed which lists all attempts made to dial this connection (for the current call). The reason why each of the unsuccessful attempts failed will be displayed.

